

# Celebrating Pathways of Progress

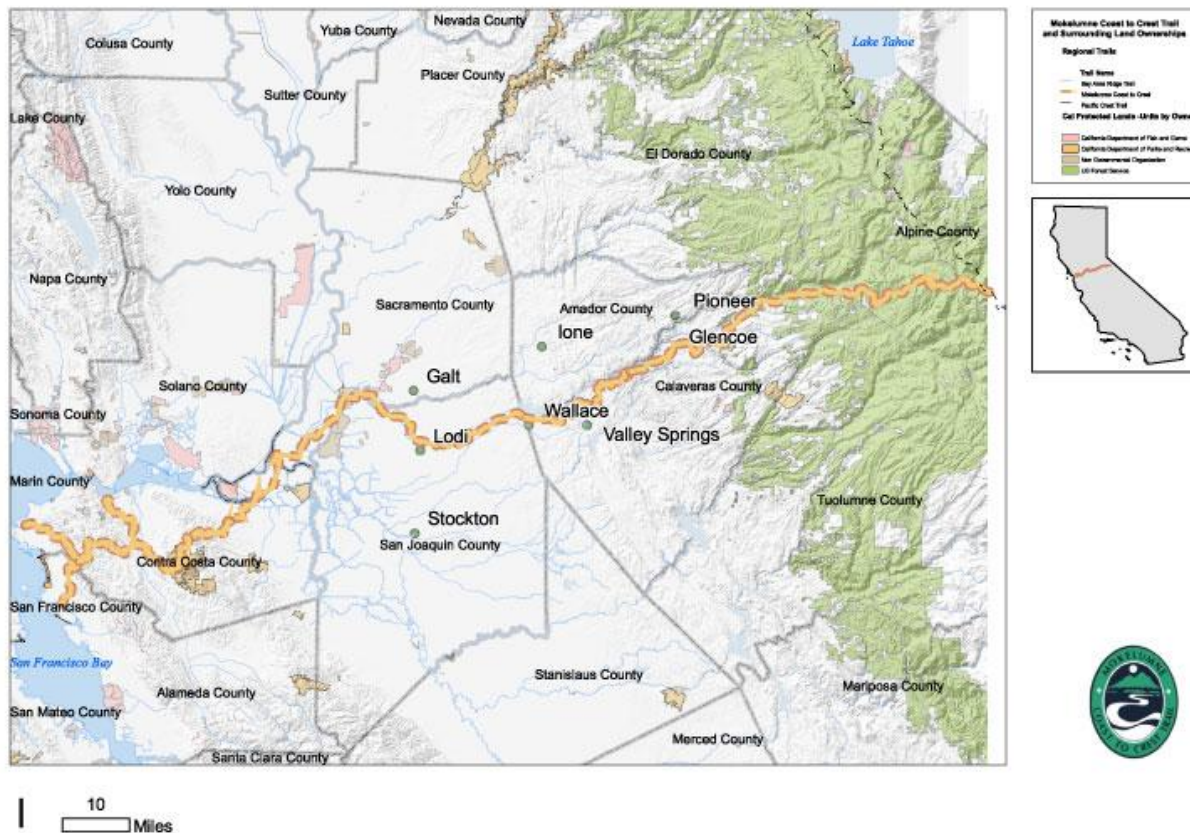
What we've accomplished and where we are



April 7, 2010 ♦ Calaveras Council of Governments

# Trail Alignment

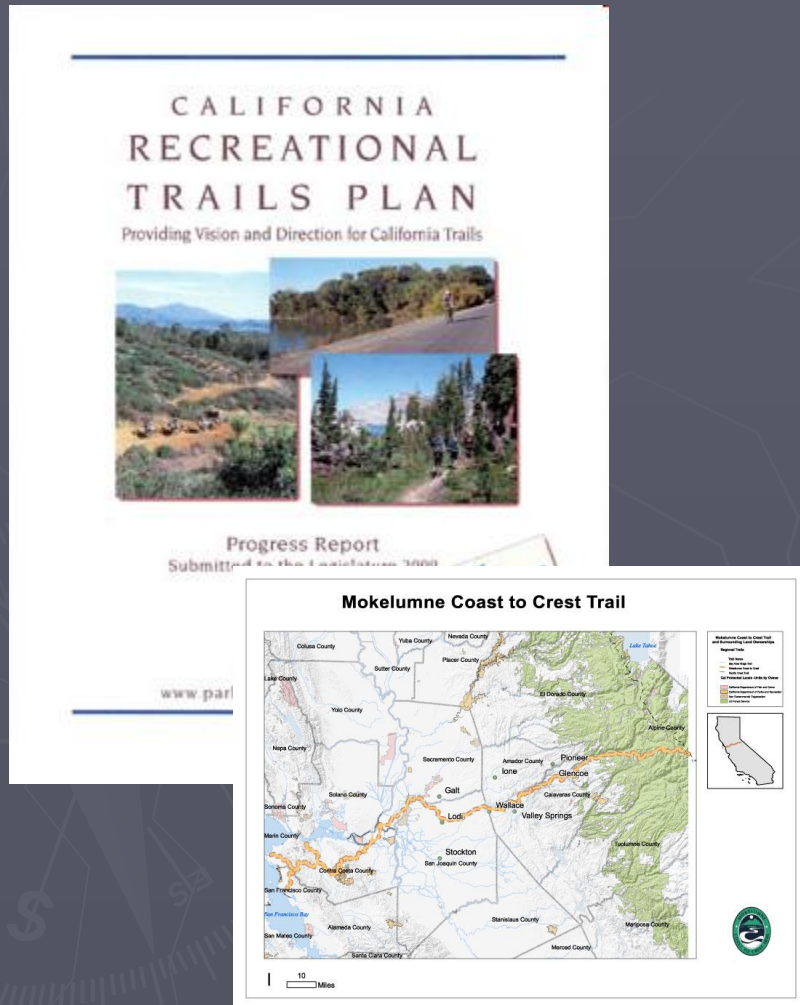
## Mokelumne Coast to Crest Trail





# Mokelumne Coast to Crest Trail

## A trail bisecting California



- Goals and objectives
- Design standards
- Oversight bodies
- Community involvement
- Adopted planning guide

# Who We Are

## MCCT Trail Council



**Steve Diers**

Vice Chairperson,  
Director & East Bay  
Municipal Utility District  
Segment Coordinator



**Mary Boblet**

Director & Upper  
Mokelumne Segment  
Coordinator



**Jean Tarabek**

Secretary, Director &  
East Bay - Contra Costa  
County Segment  
Coordinator



**Bob Yates**

Treasurer & Director



**Karen Smart**

Director & Webmaster



**Joseph Chavoan**

Director



**Matt Patwell**

At Large Member  
REI





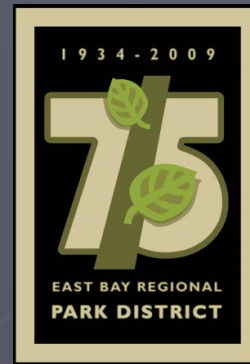
# Who We Are MCCT Partners & Supporters



WELCOME TO BAY AREA  
BARNs AND TRAILS



- Trail Council
- Business Partner
- Caretaker
- Builder
- Sponsor
- Supporter



Calaveras COG April 7, 2010



Ride It ♦ Hike It ♦ Bike It!

# Ride It ♦ Hike It ♦ Bike It!



- ▶ Quality of life
  - Neighbors, community & families coming together sharing common experiences
- ▶ Healthy lifestyle, get fit
  - Biking, hiking, walking, trail-running, horseback riding, nature-watching
- ▶ Alternative transportation
  - Cleaner air, healthier environment
- ▶ Natural resource protection
  - Open space, riparian areas, old-growth forest and wildlife habitat now and for future generations
- ▶ Opportunities for education and trail building
  - Appreciation and stewardship of each region's natural environment and cultural heritage
- ▶ Enhanced economic value
  - Business clusters, property value impact near the trail



# Our Mission

- ▶ **Multi-use trail crossing the state**
- ▶ **Link communities with outdoor environment**
- ▶ **Foster awareness and appreciation**
  - **Natural**
  - **Cultural**
  - **Historical**



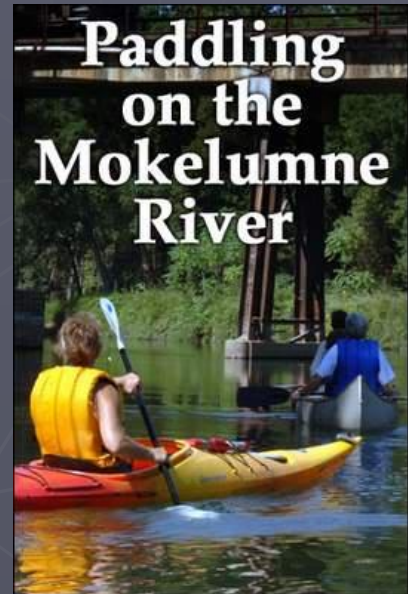


# Our Vision



Residents and visitors of varying ages and physical abilities will enjoy and experience healthy outdoor leisure activities year round

- Urban greenbelt of the San Francisco Bay
- Protected open space and parkland of the East Bay
- Rural landscapes of the San Joaquin River Delta and Central Valley
- Mother Lode country
- Forested slopes of the Mokelumne River canyon and High Sierra



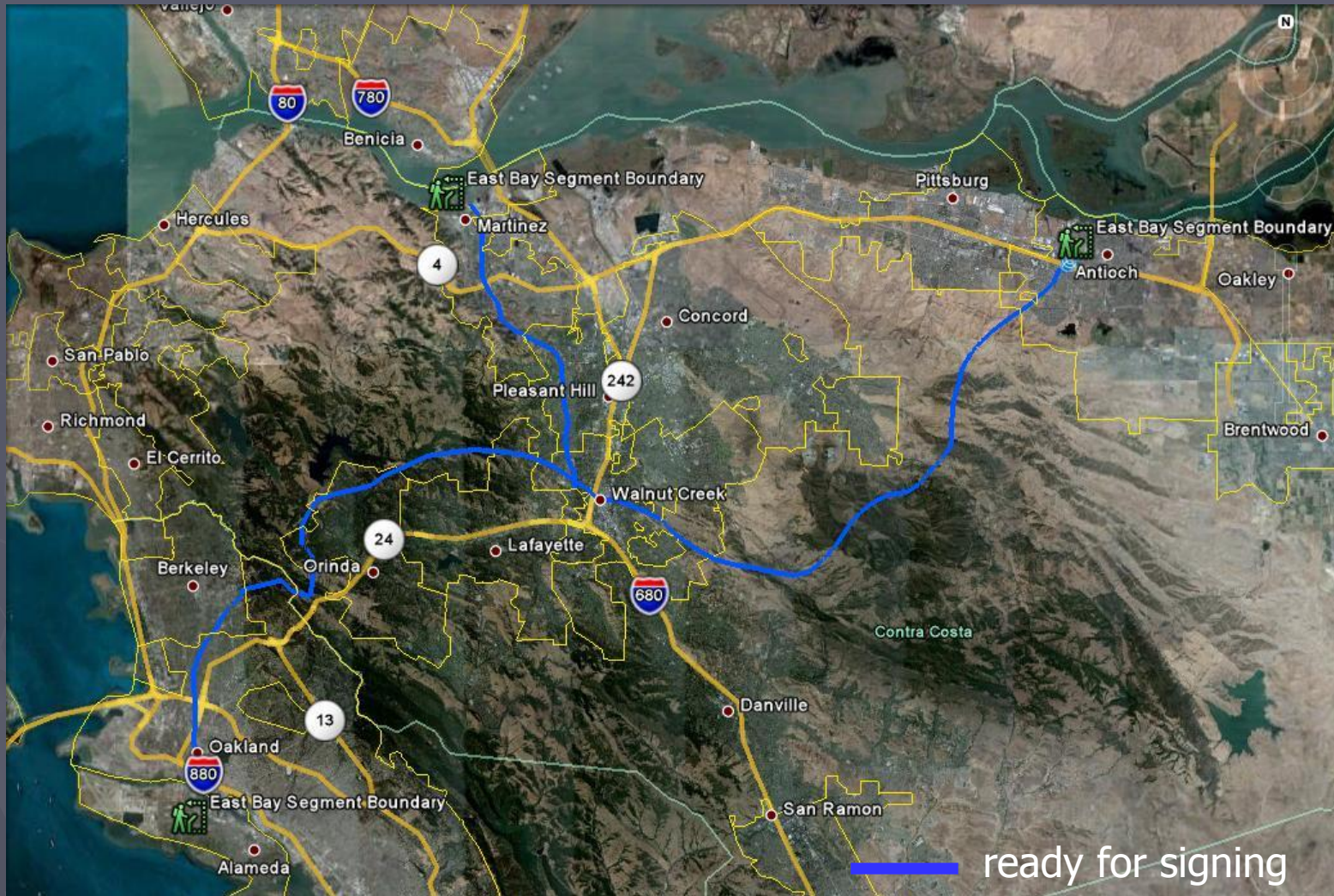
# Rules of the road - trail etiquette



- **Observe trail signs**
- **Stay on the trail**
- **Be responsible, safe, and considerate**
- **Follow local rules**
- **Respect private property**
- **Minimize your impact**
- **Protect plants and wildlife**
- **Bring along a GPS & cell**



# East Bay - Contra Costa Segment

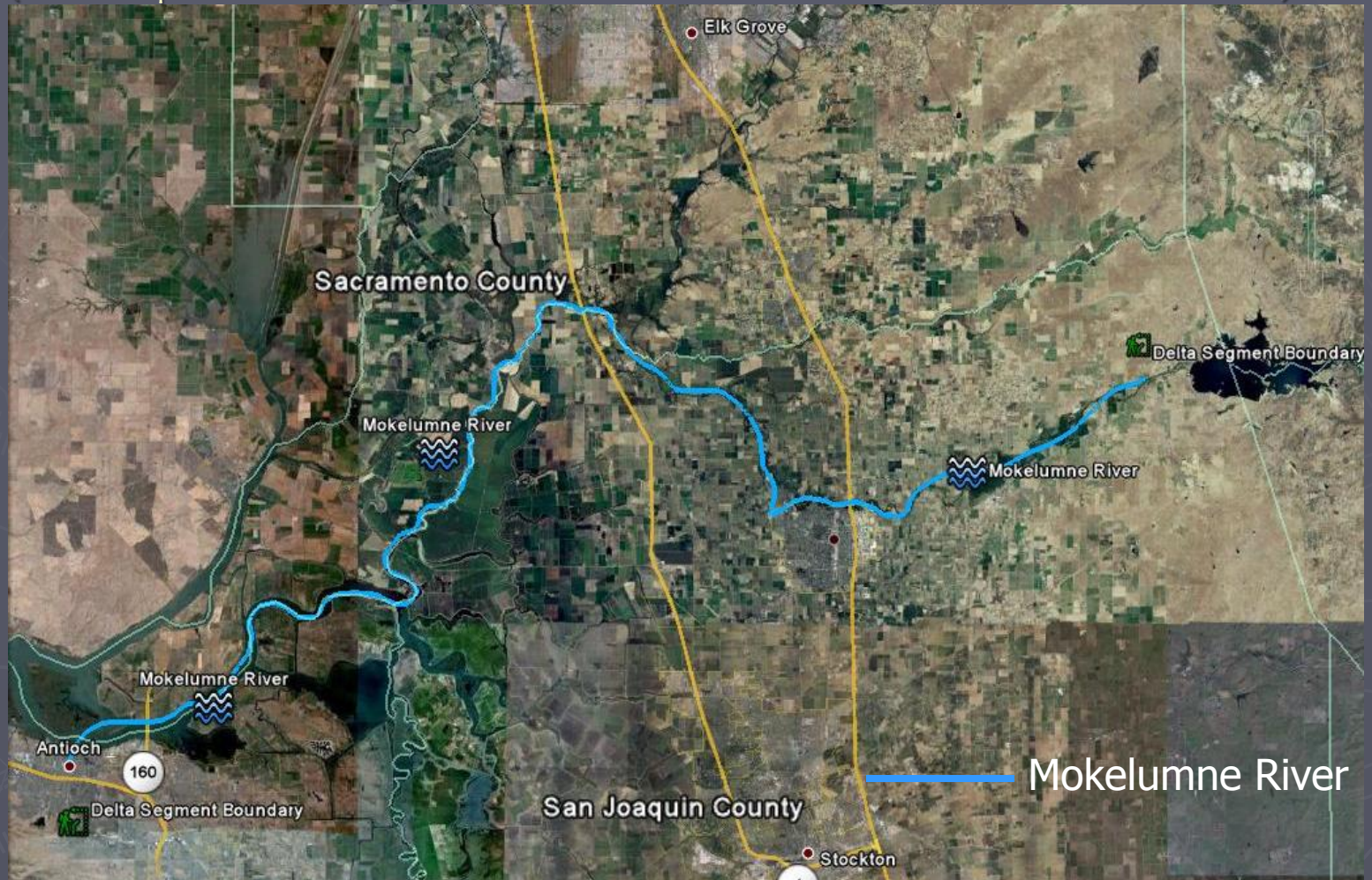




# Delta Segment

## San Joaquin – Sacramento County

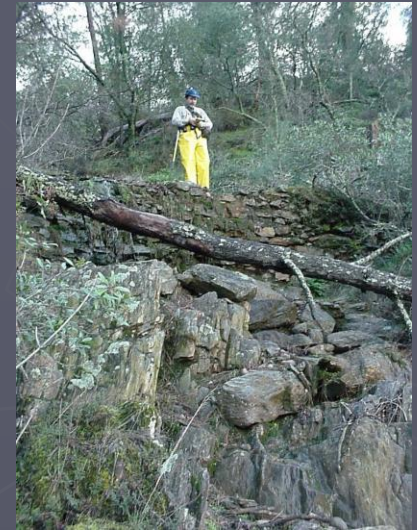
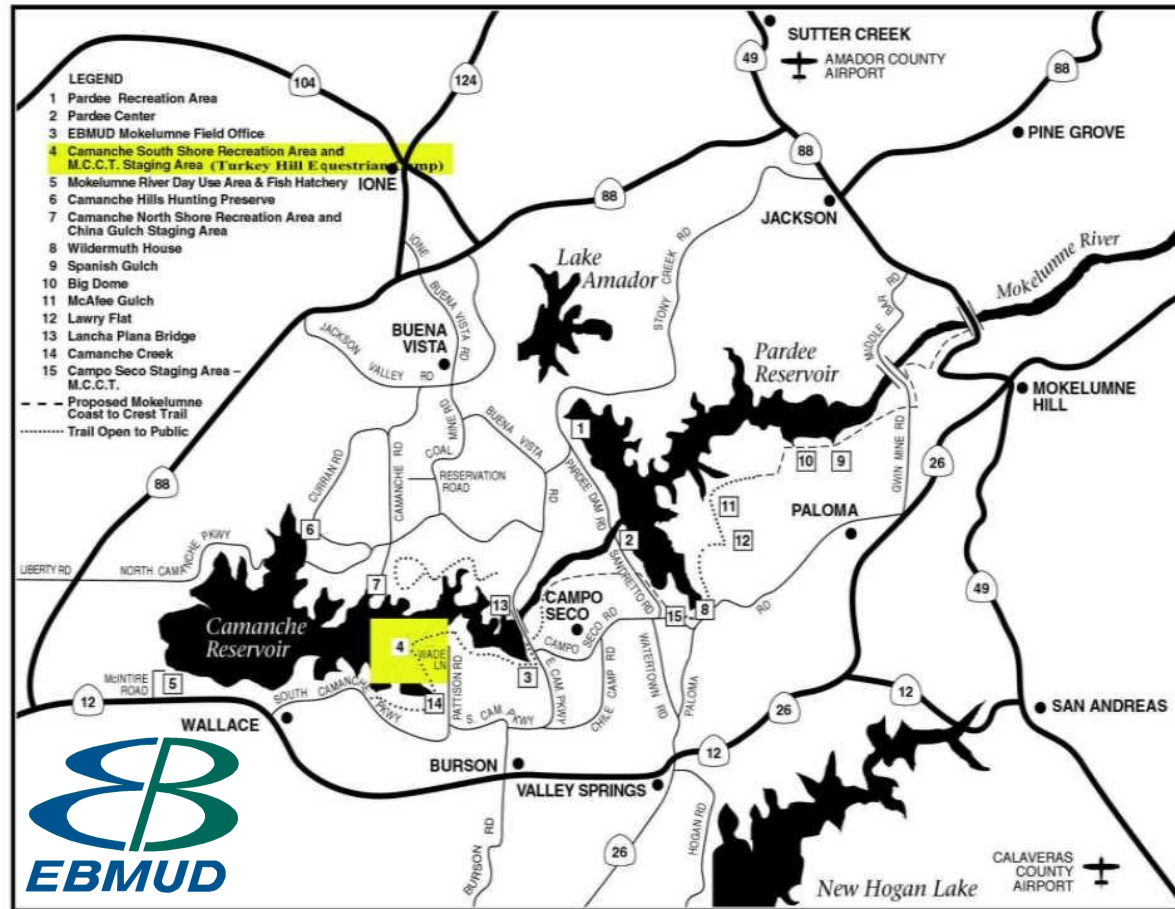
(concept is to align on conserved lands and on the river)





# Camanche Pardee Segment Calaveras County

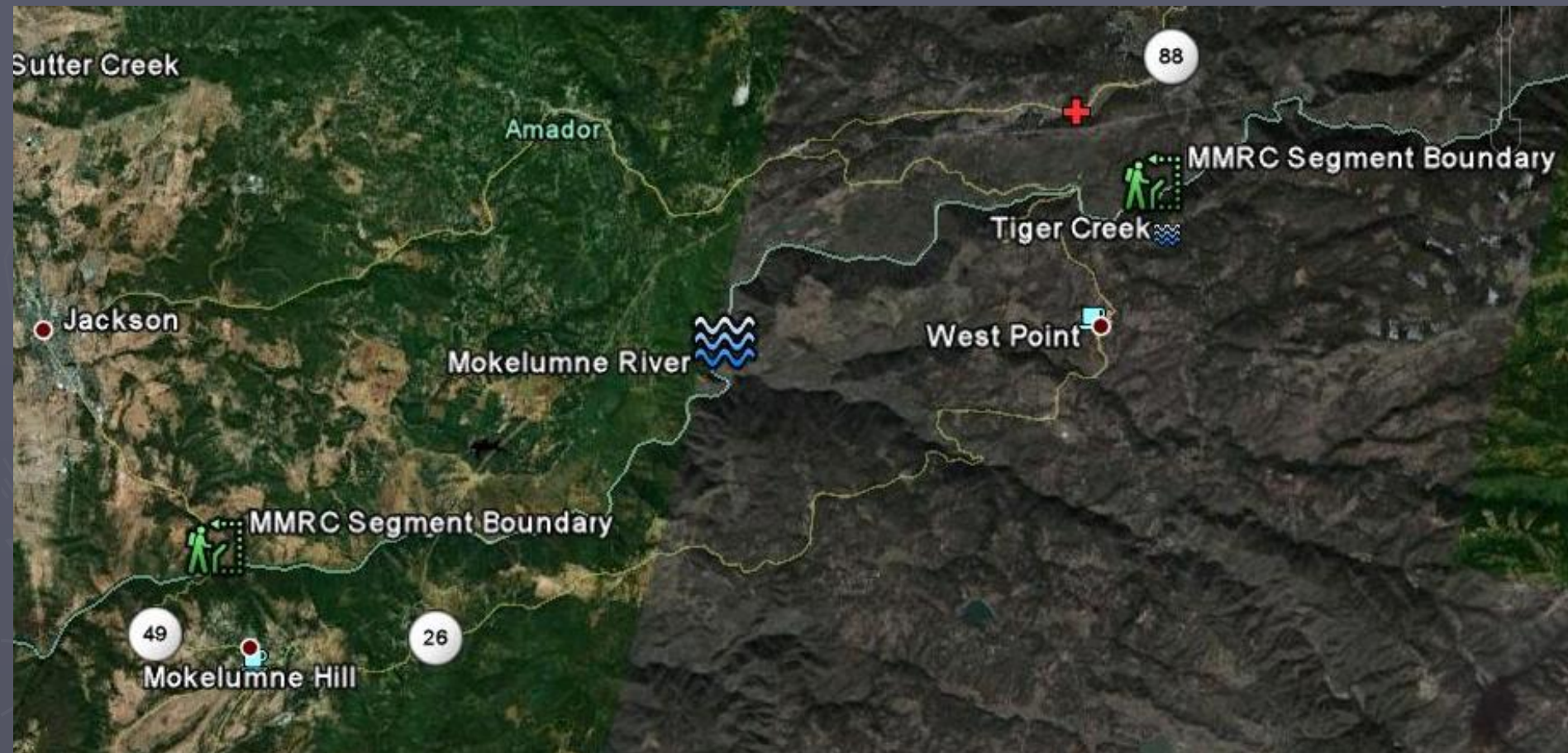
## MOKELUMNE AREA



10/02/2009



# Middle Mokelumne River Canyon Segment





# Upper Mokelumne River Canyon Segment



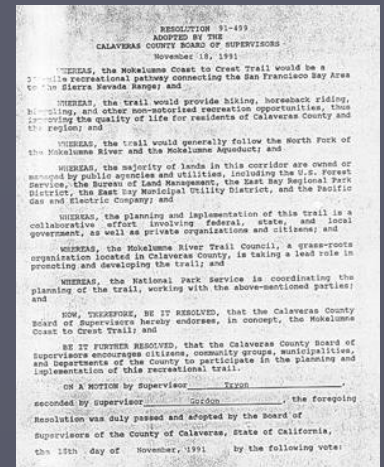


# Progress 1987-1989

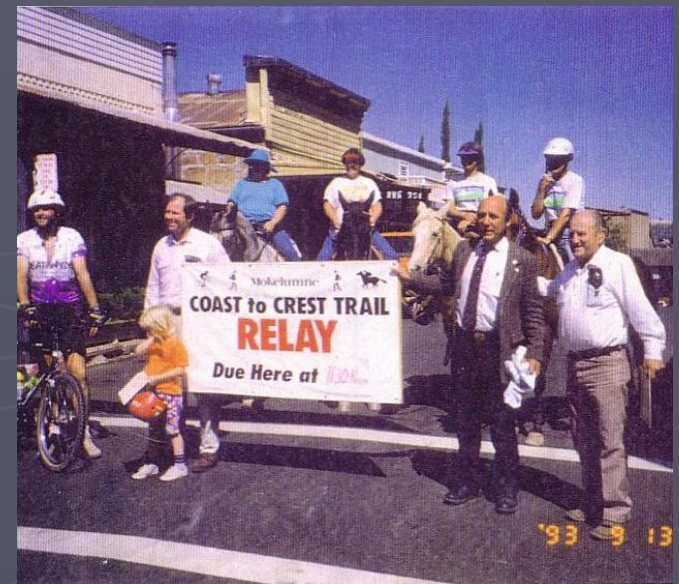


- ▶ It all started in 1987 by equestrians wishing to ride a trail along the Mokelumne River without running up against private property
- ▶ The National Park Service Rivers & Trails Conservation Assistance Program helped create a MCCT planning guide

# 1990-1999



Calaveras Supervisors: Taylor, McKay, Gordon, Tryon, Dell'Orto



Ride It ♦ Hike It ♦ Bike It!





# 2000-2008

- ▶ Millennium Trails 2000 designation by the Clinton White House
- ▶ Nonprofit status
- ▶ Fundraisers
  - Survival Outdoor Safety Fundraiser
  - Wine Rides
  - Poker Rides
- ▶ Trail building & dedications



# 2008-2010

- 2008 - 2010 Trail building and dedications
  - EBMUD
  - East Bay at Nejedly Staging area in Martinez
  - Upper Mokelumne River Canyon



- 2009 – Projects funded
  - GIS/GPS mapping, consensus building tools and internet promotion
  - ARRA for Garnet Hill to Calaveras Dome trail segment



# Trail Building and Dedications



- ▶ East Bay Parks & Recreation 1990 – present
  - From Tilden Park to Antioch and Brentwood
  - Nejedly Staging Area map panel

- ▶ EBMUD 1990 – today
  - Camanche / Pardee Watershed
    - ▶ Pardee, Camanche, Penn Mine & Campo Seco
    - ▶ Published maps and guides



- ▶ Stanislaus Nat'l Forest 1995 – today
  - Lake Alpine shoreline
  - Moore Creek to Corral Hollow (except for small section at Garnet Hill)
  - published SNF map



# Where we are today



- ▶ **Trail building**
- ▶ **Planning & maintaining**
- ▶ **Fund acquisition**
- ▶ **New partners, new tools**



# Forging forward

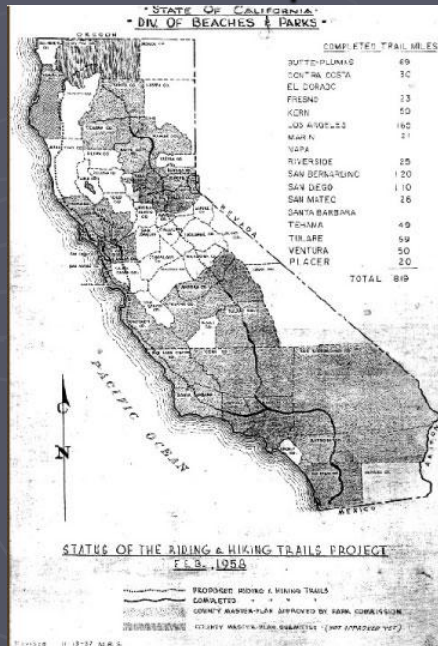
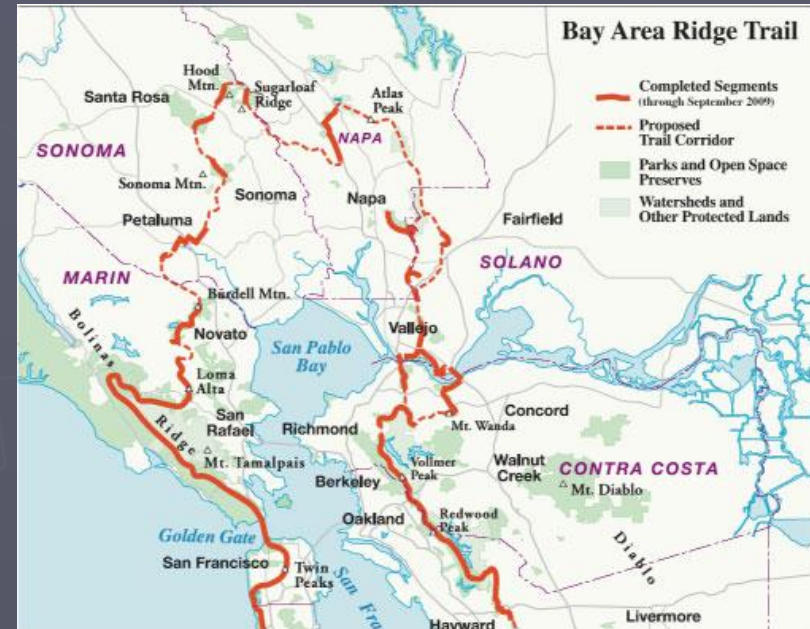


# Beyond MCCT

## ► Connectors

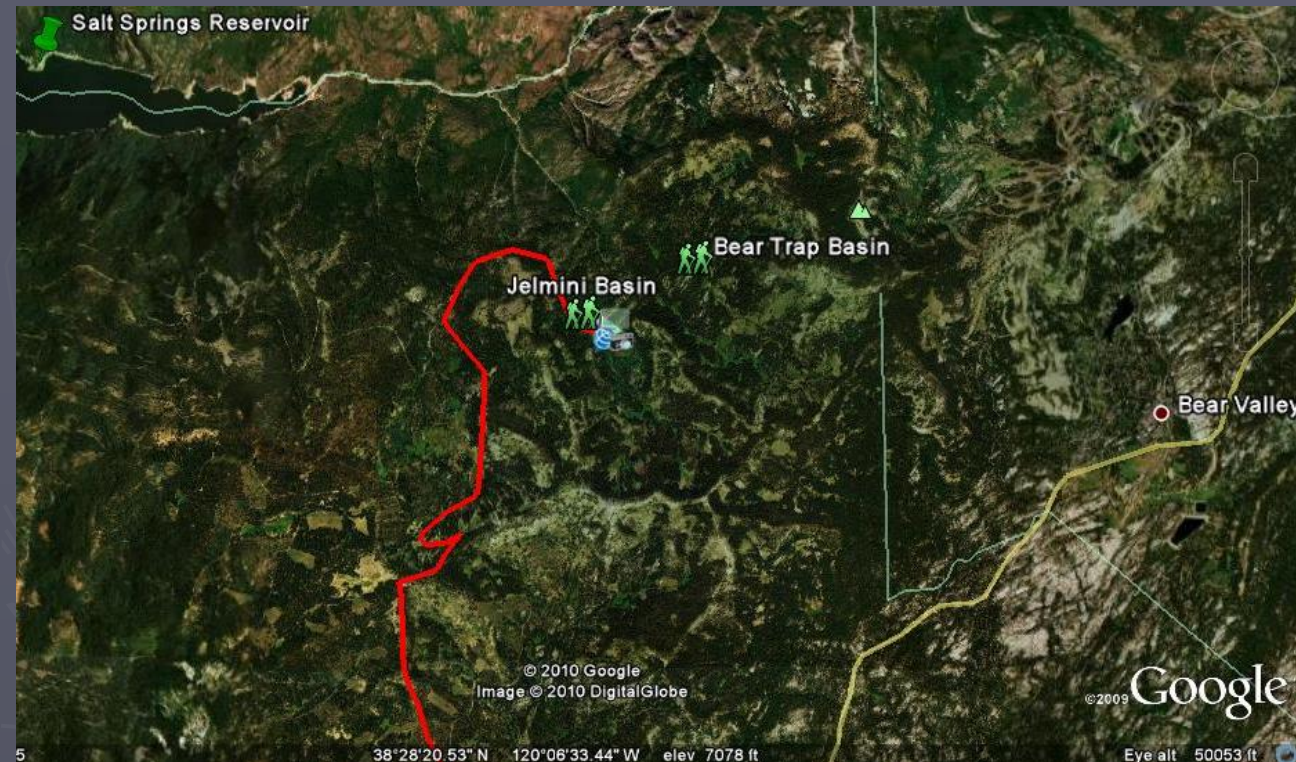
- Bay Area Ridge Trail
- Pacific Crest Trail
- Tahoe Rim Trail via the Pacific Crest Trail
- Middle Mokelumne (planned)

## ► Online trail routes and maps with pics & video





# Mapping trails with the Internet GPS Vendors and Google Earth

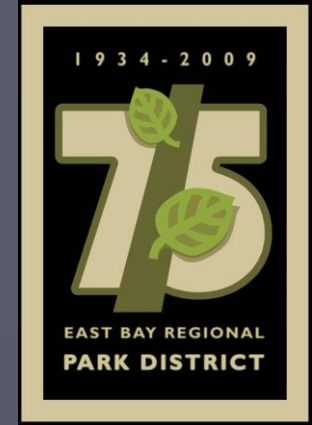


Total one way  
8.12 mi

Elevation:

Total Gain:  
1631 ft  
Total Loss:  
1266 ft  
Net Change:  
365 ft

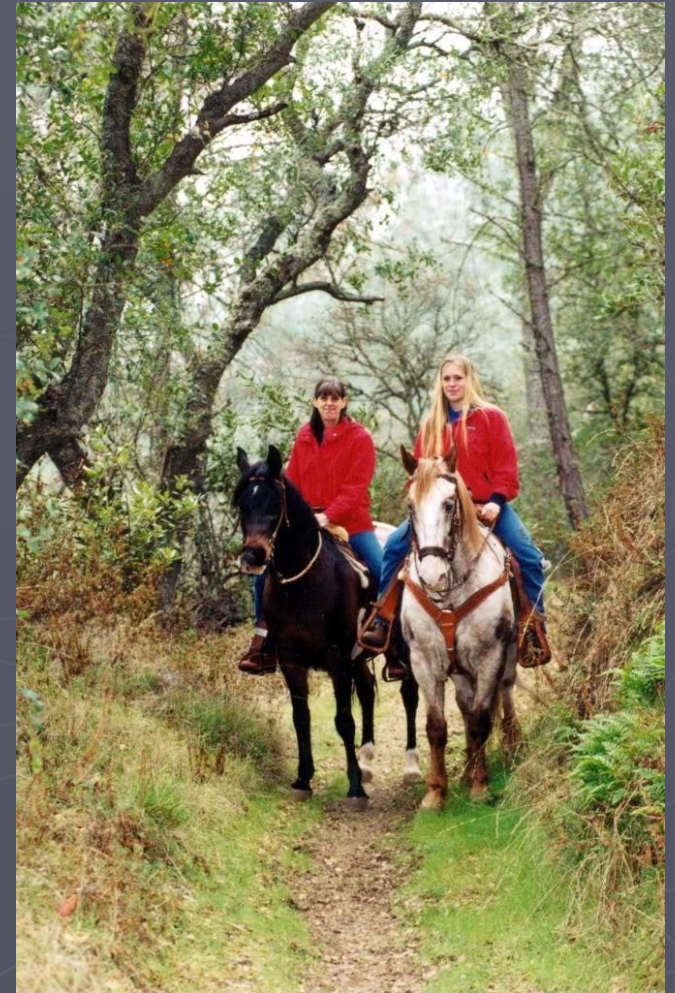
# MCCT Network





# Economic Benefits

- ▶ Tourism
  - Be mobile-wise
- ▶ Tourist-based amenities
  - Sports and recreation retail
  - Food & supplies
  - Gathering spots
- ▶ Destinations
- ▶ Positive impact on nearby property values
- ▶ Trail etiquette & local trail enforcement cost/benefit





# Community Benefits



- Become or stay healthy with family and friends
- Enhance identity, pride and quality of life
- Connect with and explore other communities



# Stewardship

- 
- ▶ **Preserve open space resources in both urban and rural area**
    - Greenbelt
    - riparian habitat
    - old growth forest
    - wildlife habitat
  - ▶ **Bring trails *to the people***



# Transportation Benefits

- ▶ Gets us out of the car and off the motorcycle
- ▶ Work or school commute
- ▶ Reduce traveler's carbon footprint







# Awards

- ▶ Community Millennium Trail 2000
  - White House Millennium Council
  - Secured with Patricia Garamendi's assistance
  
- ▶ Take Pride In California 1994
  - Trailbusters (& EBMUD) for volunteer stewardship
  - U.S. Department of the Interior
  
- ▶ Trail Merit Award 1999
  - Trailbusters (& EBMUD)
  - Annual State Trails Conference





## Thank You!

Many, many, thanks to everyone and every organization participating over these last 20+ years to build and maintain this trail.

Thanks also to all the hikers, equestrians, bicyclists, nature lovers, photographers, historians, tourists, and trail runners who use and lovingly care for this trail.